



SmartPipeXL™

3" to 8" Aluminum Compressed Air Piping

Product Catalog

kaeser.com

SmartPipeXL™

Compressed Air Piping

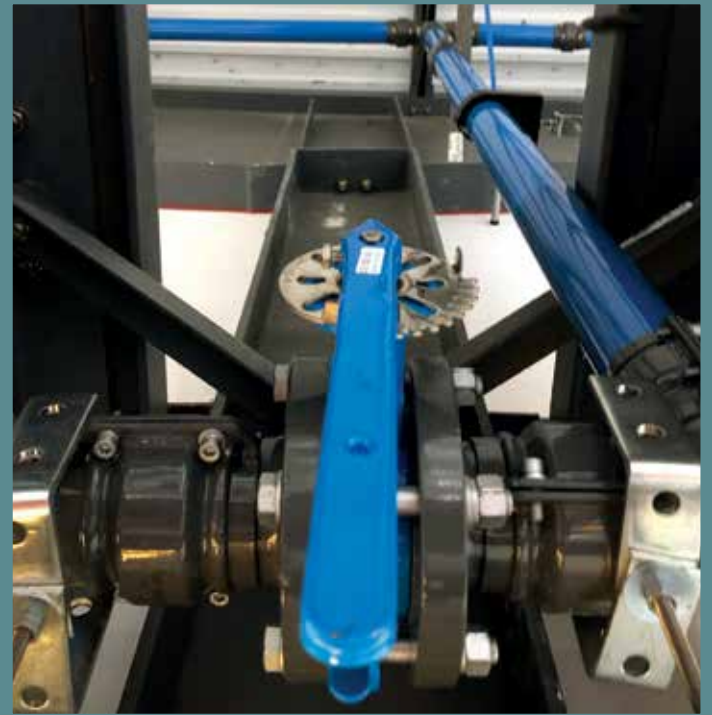
Kaeser's SmartPipeXL is a modular compressed air distribution system that offers both lower installation costs and lower long term operating costs.

Piping selection directly affects the three key elements of every compressed air system: flow, pressure, and air quality. Poor choices in pipe materials, diameter, and layout cause flow restrictions, often resulting in significant pressure drop. Pressure drop is a leading cause of increased energy consumption and underperforming air driven tools and equipment.

Choices in piping also directly impact installation costs. Heavier materials cause fatigue and slow work, especially in overhead installations. The types of fittings used must also be considered. Some connection types cause pressure drop, need special tools, and take more time to install.

SmartPipeXL offers an excellent choice for compressed air and inert gas distribution for pressures up to 232 psig (16 bar) (3" to 6", 188 psig for 8") in temperatures from -4°F to 176°F (-20°C to 80°C). SmartPipeXL is also ideal for vacuum up to 93.3% (28" Hg).





Technical Specifications

SmartPipeXL is designed for use with compressed air, vacuum, and inert gases

Pressure and Temperature Ranges

- Maximum working pressure:
 - 232 psi (3" to 6")
 - 188 psi (8")
- Maximum vacuum: 28.00" Hg
- Operating temperature: -4°F to 176°F
- Storage temperature: -40°F to 176°F
- Consult factory for higher pressures or temperatures

Aluminum Pipe Specification

- 6063-T5 grade aluminum
- Pipe conforms to standards EN755.2 and EN755.8
- Smooth bore ID for optimal flow performance
- Powder coat in blue (RAL5012)
- Consult factory for availability of other colors

Flexible Hose Specification

- Resistant to mineral and synthetic oils

Fitting Specifications

- Fittings are A360 and ZL104 aluminum without the use of plastic or polyamide fitting bodies, except for equal union connectors 2½" to 8" which are hot plate, rolled steel and powder coated. Pipe-to-pipe sealing utilizes concentric Nitrile seals with a thickness greater than ½".
- Fittings ¾" to 2" utilize 316 stainless steel grab rings with a greater than 2 mm cross-sectional width that bites into pipe past the powder coated surface. Fittings 2½" to 8" utilize a lugged groove.
- 100% recyclable and non-flammable materials (UL 94-HB standard).
- Modular and reusable.

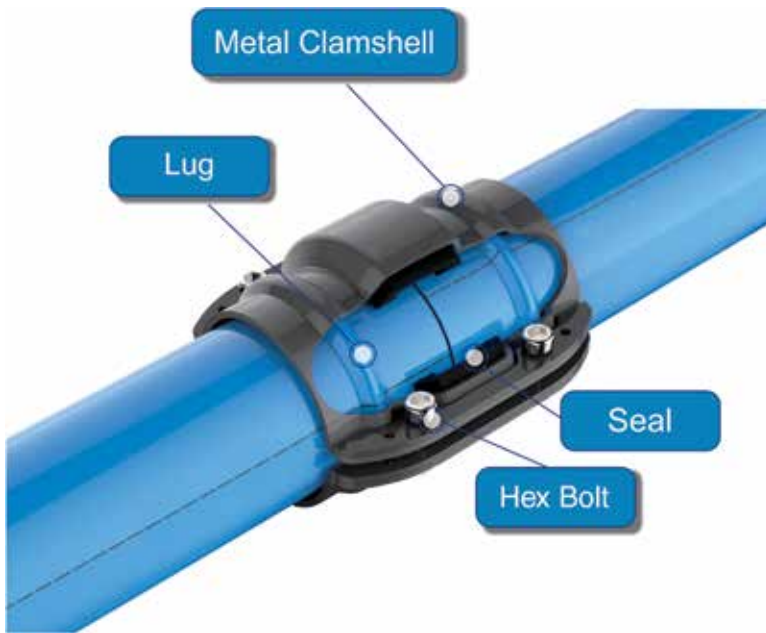


Pipe Sizes

Nominal Ø (in.)	Nominal Ø (mm)	Outside Ø (in.)	Outside Ø (mm)	Inside Ø (in.)	Inside Ø (mm)	Wall Thickness (in.)	Wall Thickness (mm)
3	80	3-5/16	84.8	3-1/8	80	1/16	2.4
4	100	4	101.8	3-13/16	96.8	1/8	2.5
6	150	6	153	5-13/16	147.5	1/8	2.75
8	200	8-1/16	205	7-13/16	198.6	1/8	3.2

Specifications subject to change without notice.

Lugged Ring Clamping Style Connection



- Quick install and reassembly
- Metal clamshell union connector
- Convex ring, no shrinking on inner diameter
- Surface contact, active concentric sealing
- Leak free
- Superior reliability and longevity

Certification

- SmartPipeXL meets the requirement of ASME B31.1 which stipulates the minimum requirements for the design, materials, fabrication, installation, test, and inspection of power and auxiliary piping systems for industrial plants.
- SmartPipeXL also conforms to European standard 2014/68/EU regarding equipment under pressure.
- With proper installation, Kaeser warrants its SmartPipeXL products to be free of defects in material and workmanship for a period of ten (10) years from the date of purchase of the products.



Specifications subject to change without notice.

Sizing

Select the SmartPipeXL diameter for your application

Pipe size recommended based on 116 psig and less than 5.5 psi pressure drop
 Recommendations will be different for linear distribution networks



For Looped or Ring Distribution Networks

Flow (cfm)	Equivalent Length (ft)									
	200	400	500	1000	1500	2500	3000	4000	5000	6500
450								80	80	80
600						80	80	100	100	100
750										
900					80	100	100	100	100	100
1100				80						
1250			80	100	100	150	150	150	150	150
1550		80								
1900	80	100	100	150	150	150	150	150	150	150
2200										
2500										
2800										
3100	100	100	150	150	150	150	150	150	150	150
3400										
3700	100	100	150	150	150	150	150	150	150	150
4000	150	150	150	150	150	150	150	150	150	150
4650	200	200	200	200	200	200	200	200	200	200
5000										
5300										
6200										
7500	200	200	200	200	200	200	200	200	200	200

NOTE: For flows below the range shown, see 3/4" to 2 1/2" SmartPipe+

Specifications subject to change without notice.

Sizing Examples

Example 1

An application requires three CSD 75s @ 115 psig with the appropriate air treatment. The application cannot tolerate a pressure drop of more than 6 psig in the main header when the main distribution header pressure is 100 psig.

Kaeser CSD 75 @ 115 psig = 345 cfm (FAD)
Kaeser CSD 75 @ 115 psig = 345 cfm (FAD)
Kaeser CSD 75 @ 115 psig = 345 cfm (FAD)
Total flow = 1035 cfm

The main distribution pipe length (including equivalent length for all fittings) = 1500 ft.

For a flow of 1035 cfm through 1500 feet, the chart shows that 3" (80 mm) diameter pipe should be used.

Example 2

An application requires two Kaeser DSD 200s and two CSD 125s @ 115 psig with the appropriate air treatment. The application cannot tolerate a pressure drop of more than 6 psig in the main header when the main distribution header pressure is 100 psig.

Kaeser DSD 200 @ 115 psig = 886 cfm (FAD)
Kaeser DSD 200 @ 115 psig = 886 cfm (FAD)
Kaeser CSD 125 @ 115 psig = 567 cfm (FAD)
Kaeser CSD 125 @ 115 psig = 567 cfm (FAD)
Total flow = 2906 cfm

The main distribution pipe length (including equivalent length for all fittings) = 2500 ft.

For a flow of 2906 cfm through 2500 feet, the chart shows that a 6" (150 mm) diameter looped or ring distribution piping should be used.

Consider upsizing to allow for future increases in system capacity

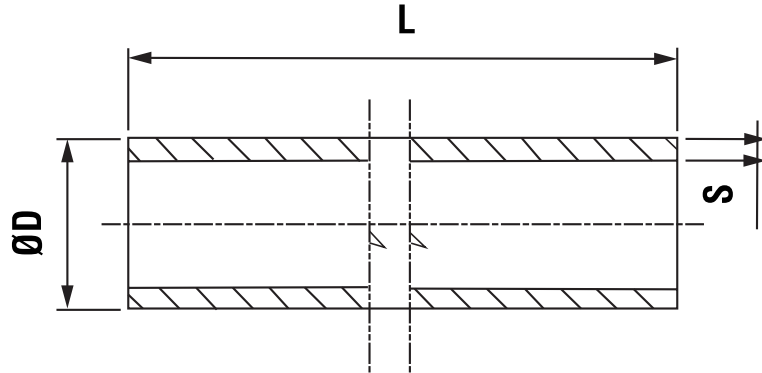


Aluminum Pipe



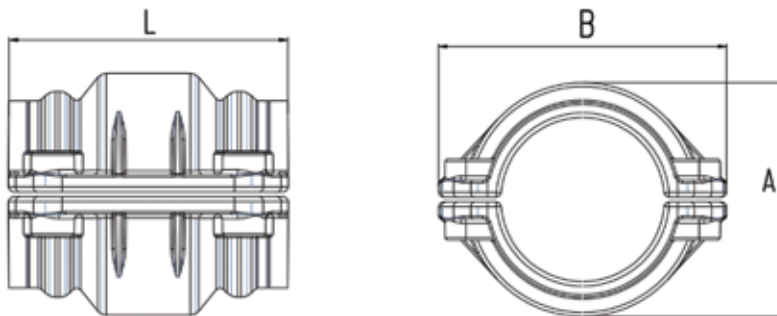
Part No.	ØD (mm)	L	S (Wall Thickness)	Weight
ANK7000	80	19'	1/16	23.46
ANK8000	100		29.76	
ANK9000	150		1/8	50.04
ANKA000	200		76.72	

Factory supplied ends include rolled grooves. Cut ends must be lugged in the field. Requires part number ANK0844.



Equal Union

Part No.	ØD (mm)	L	A	B	Weight
ANK6002	63	4-1/2	3-7/8	4-3/4	1.78
ANK7002	80		4-1/2	5-3/8	2.94
ANK8002	100	5-3/4	5-1/16	6-3/16	4.01
ANK9002	150		7-3/8	8-13/16	8.45
ANKA002	200	5-5/16	9-7/16	10-7/16	9.46



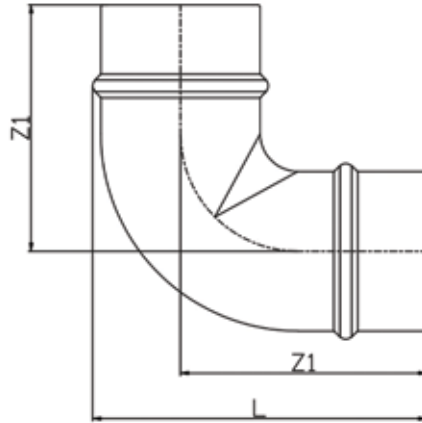
Dimensions in inches (in.) and weight in pounds (lbs.) unless otherwise noted. For 3/4" through 2 1/2" piping and fittings, see SmartPipe+. For installation instructions see SmartPipeXL Installation Guide. **Specifications subject to change without notice.**

Equal 90° Elbow



Part No.	ØD (mm)	L	Z1	Weight
ANK7003	80	6-1/8	4-5/16	1.30
ANK8003	100	7-5/8	5-1/2	2.38
ANK9003	150	10-7/16	7-1/4	5.35
ANKA003	200	12-3/8	8-3/16	9.46

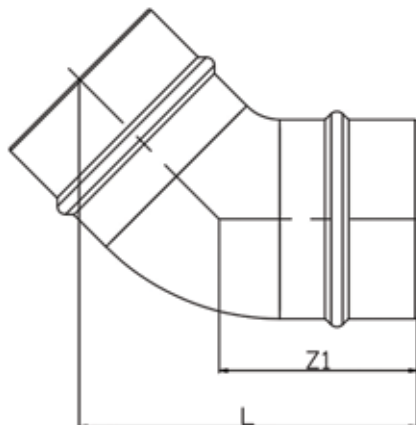
Supplied with 2 union connectors



45° Elbow

Part No.	ØD (mm)	L	Z1	Weight
ANK7004	80	5-11/16	3-3/8	1.08
ANK8004	100	7-1/16	4-1/8	2.02
ANK9004	150	8-7/16	4-15/16	4.63
ANKA004	200	9-1/16	5-5/16	9.92

Supplied with 2 union connectors



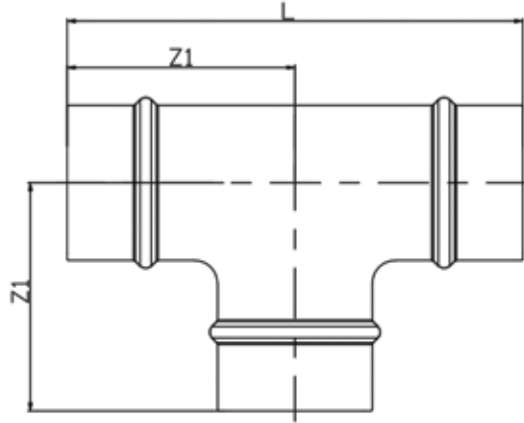
Dimensions in inches (in.) and weight in pounds (lbs.) unless otherwise noted. For 3/4" through 2 1/2" piping and fittings, see SmartPipe+. For installation instructions see SmartPipeXL Installation Guide. **Specifications subject to change without notice.**

Equal Tee



Part No.	ØD (mm)	L	Z1	Weight
ANK7005	80	8-11/16	4-5/16	1.95
ANK8005	100	10-5/16	5-3/16	2.02
ANK9005	150	13-1/16	6-11/16	6.50
ANKA005	200	14-3/4	7-3/8	7.61

Supplied with 3 union connectors

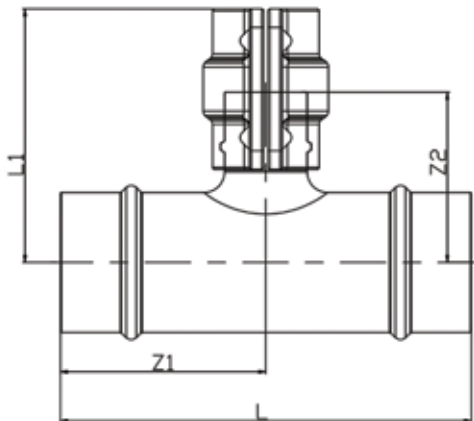


Reducing Tee

Part No.	ØD (mm)	L	Z1	L1	Z2	Weight
ANK7407	80 x 40	7-1/2	3-15/16	5-3/16	3-1/4	2.03
ANK7507	80 x 50	7-7/8	4-3/16	5-1/4	3-5/8	2.26
ANK8507	100 x 50	8-7/8	4-5/8	5-9/16	3-15/16	5.51

Supplied with 2 union connectors, 3rd union connector installed as shown.

Note: Additional transition fittings are required to connect to SmartPipe+.



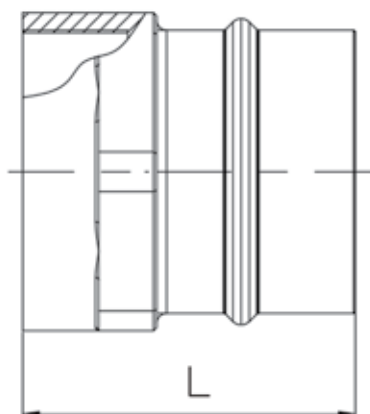
Dimensions in inches (in.) and weight in pounds (lbs.) unless otherwise noted. For 3/4" through 2 1/2" piping and fittings, see SmartPipe+. For installation instructions see SmartPipeXL Installation Guide. **Specifications subject to change without notice.**

Female Adapter



Part No.	ØD (mm)	L	NPT	Weight
ANK6619	63	3-11/16	2-1/2	0.76
ANK7719	80	3-15/16	3	0.87

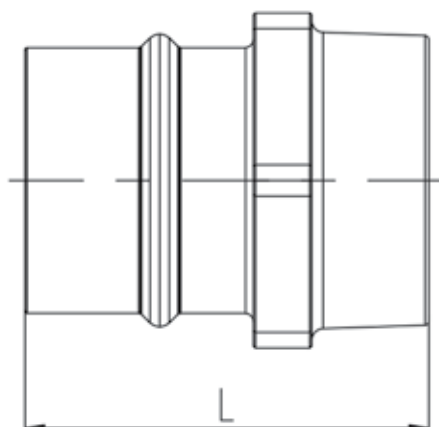
Supplied with union connector



Male Adapter

Part No.	ØD (mm)	L	NPT	Weight
ANK6517	63	3-7/8	2	0.69
ANK6617	63	4-1/16	2-1/2	0.91
ANK7617	80	4-3/16	2-1/2	0.95
ANK7717	80	4-5/16	3	0.98

Supplied with union connector



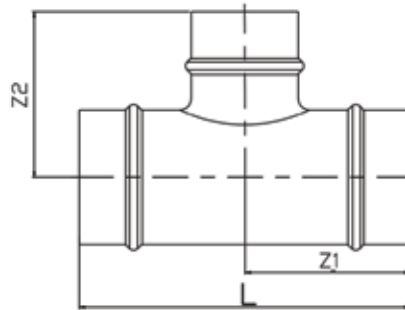
Dimensions in inches (in.) and weight in pounds (lbs.) unless otherwise noted. For 3/4" through 2 1/2" piping and fittings, see SmartPipe+. For installation instructions see SmartPipeXL Installation Guide. **Specifications subject to change without notice.**

Reducing Tee



Part No.	ØD (mm)	L	Z1	Z2	Weight
ANK7607	80 x 63	8-1/4	4-1/8	4-1/8	1.63
ANK8607	100 x 63	9-5/16	4-5/8	4-5/8	4.59
ANK8707	100 x 80	9-11/16	4-13/16	4-3/4	6.83
ANK9607	150 x 63	9-1/2	4-3/4	5-15/16	4.71
ANK9707	150 x 80	8-7/8	5-3/16	5-13/16	5.79
ANK9807	150 x 100	10-11/16	5-3/8	6-3/8	6.17
ANKA607	200 x 63	9-7/16	4-3/4	6-11/16	7.94
ANKA707	200 x 80	10-1/16	5-1/16	6-3/4	8.30
ANKA807	200 x 100	10-7/8	5-7/16	7-3/16	8.21
ANKA907	200 x 150	13-9/16	6-3/4	7-3/16	8.27

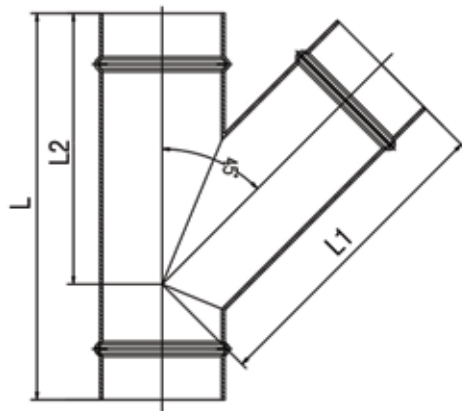
Supplied with 3 union connectors



Lateral Equal Tee

Part No.	ØD (mm)	L	L1	L2	Weight
ANK7009	80	10-5/16	8-5/16	7-1/4	1.95
ANK8009	100	12	9-11/16	8-3/8	3.47
ANK9009	150	15-3/16	13-3/8	11	6.50
ANKA009	200	18-1/16	15-3/4	13-11/16	12.46

Supplied with 3 union connectors



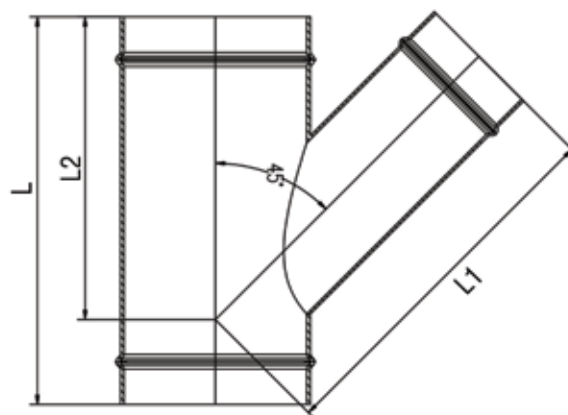
Dimensions in inches (in.) and weight in pounds (lbs.) unless otherwise noted. For 3/4" through 2 1/2" piping and fittings, see SmartPipe+. For installation instructions see SmartPipeXL Installation Guide. **Specifications subject to change without notice.**

Lateral Reducing Tee



Part No.	ØD (mm)	L	L1	L2	Weight
ANK8712	100 x 80	11-1/8	8-7/8	7-15/16	4.35
ANK9712	150 x 80	11-1/2	10-7/8	9-1/4	7.80
ANK9812	150 x 100	12-1/4	11-13/16	9-5/8	8.50
ANKA812	200 x 100	12-5/8	13-3/8	10-13/16	8.27
ANKA912	200 x 150	15-1/2	14-13/16	12-1/4	11.02

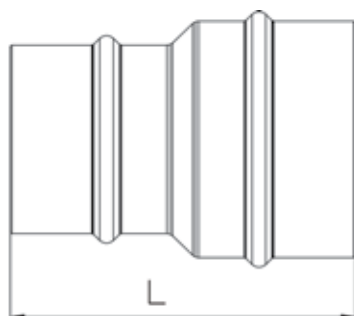
Supplied with 3 union connectors



Reducing Connector

Part No.	ØD (mm)	L	Weight
ANK7621	80 x 63	4-15/16	0.75
ANK8621	100 x 63	6	1.25
ANK8721	100 x 80	5-9/16	1.85
ANK9721	150 x 80	6-1/8	2.00
ANK9821	150 x 100	6-3/4	2.00
ANKA921	200 x 150	6-11/16	4.35

Supplied with 2 union connectors



Dimensions in inches (in.) and weight in pounds (lbs.) unless otherwise noted. For 3/4" through 2 1/2" piping and fittings, see SmartPipe+. For installation instructions see SmartPipeXL Installation Guide. **Specifications subject to change without notice.**

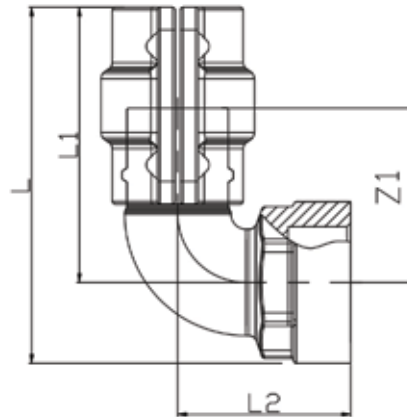
Connectors for Drops to SmartPipe+ or Other Piping

Male Threaded 90° Elbow



Part No.	ØD (mm)	L	L1	L2	NPT	Z1	Weight
ANK1115	20	3-3/4	3-1/8	1-15/16	3/4	1-15/16	0.38
ANK2215	25	4	3-1/4	2-1/16	1	2-1/16	0.47
ANK4415	40	5-9/16	4-5/16	2-5/16	1-1/2	2-5/16	1.08
ANK5515	50	5-15/16	4-1/2	2-15/16	2	2-15/16	1.43

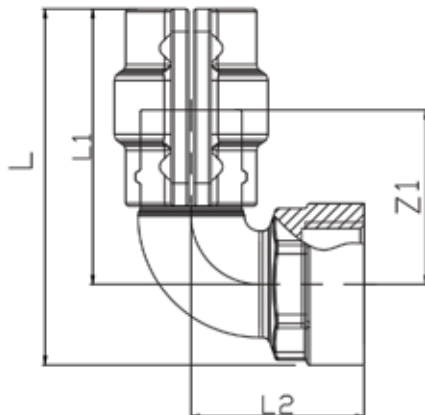
Union connector installed



Female Threaded 90° Elbow

Part No.	ØD (mm)	L	L1	L2	NPT	Z1	Weight
ANK1113	20	3-3/4	3-1/8	1-11/16	3/4	1-15/16	0.42
ANK2213	25	4	3-1/4	2-1/16	1	2-1/16	0.53
ANK4413	40	5-9/16	4-5/16	2-5/16	1-1/2	2-5/16	1.19
ANK5513	50	5-15/16	4-1/2	2-15/16	2	2-15/16	1.52

Union connector installed



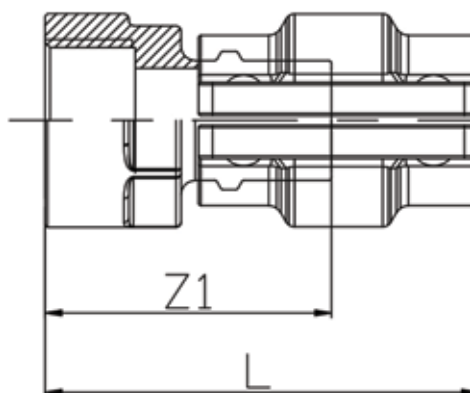
Dimensions in inches (in.) and weight in pounds (lbs.) unless otherwise noted. For 3/4" through 2 1/2" piping and fittings, see SmartPipe+. For installation instructions see SmartPipeXL Installation Guide. **Specifications subject to change without notice.**

Female Adapter



Part No.	ØD (mm)	L	NPT	Z1	Weight
ANK1119	20	3-7/16	3/4	2-1/4	0.33
ANK2219	25	3-9/16	1	2-3/8	0.45
ANK4419	40	4-11/16	1-1/2	3-1/16	0.93
ANK5519	50	4-3/4	2	3-1/8	1.12

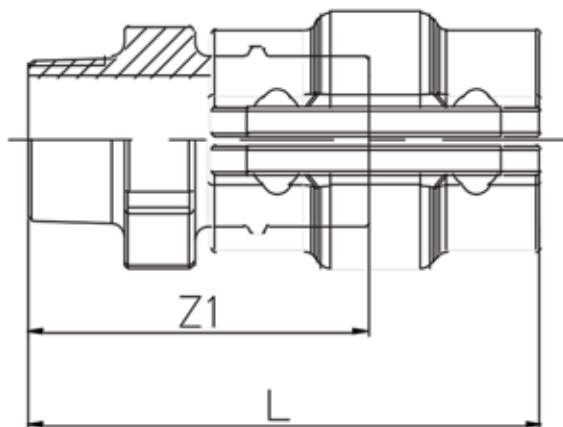
Union connector installed



Male Adapter

Part No.	ØD (mm)	L1	Z1	NPT	Weight
ANK1117	20	3-9/16	2-3/8	3/4	0.32
ANK2217	25	3-11/16	2-7/16	1	0.41
ANK4417	40	4-13/16	3-3/16	1-1/2	0.98
ANK5517	50	4-15/16	3-3/8	2	1.25

Union connector installed



Dimensions in inches (in.) and weight in pounds (lbs.) unless otherwise noted. For 3/4" through 2 1/2" piping and fittings, see SmartPipe+. For installation instructions see SmartPipeXL Installation Guide. **Specifications subject to change without notice.**

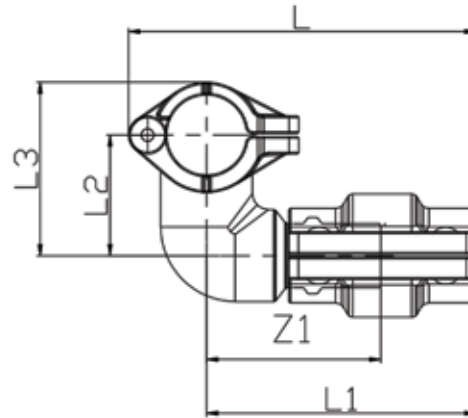
Quick Drop



Part No.	ØD (mm)	L	L1	Z1	L2	L3	Drill (mm)	Weight
ANK7110	80 x 20	6-1/4	3-1/2	2-5/16	3	5	25	1.01
ANK7210	80 x 25							1.03
ANK8110	100 x 20	6-1/16	3-1/4	2-1/16	3-13/16	6-1/16		0.97
ANK8210	100 x 25							0.99
ANK9110	150 x 20				1.10			
ANK9210	150 x 25	7-15/16			4-13/16	7-15/16		1.14
ANKA210	200 x 25	10-1/16	3-5/16	2-3/16	5-7/8	10-1/2		1.93

Union connector installed

Note: Additional transition fittings are required to connect to SmartPipe+.



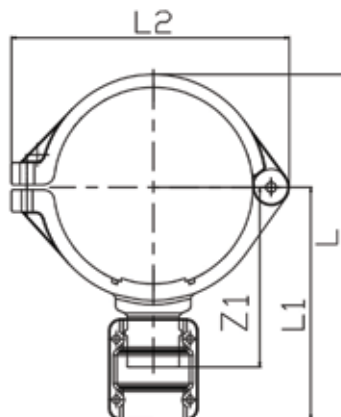
Straight Quick Drop

Part No.	ØD (mm)	L	L1	L2	Z1	Drill (mm)	Weight
ANK8410	100 x 40	8	5-1/4	10-5/16	4-1/16	38	1.62
ANK9410	150 x 40	10-1/2	7-1/16	8-7/16	5-15/16	51	2.54
ANK9510	150 x 50	10-1/16	7-1/8				2.65
ANKA410	200 x 40	12-15/16	8-1/8	10-9/16	6-15/16		2.99
ANKA510	200 x 50	13			7		3.54

Union connector installed



Note: Additional transition fittings are required to connect to SmartPipe+.



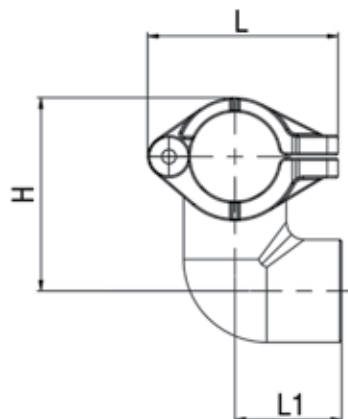
Dimensions in inches (in.) and weight in pounds (lbs.) unless otherwise noted. For 3/4" through 2 1/2" piping and fittings, see SmartPipe+. For installation instructions see SmartPipeXL Installation Guide. **Specifications subject to change without notice.**

Quick Drop Female Thread



NPT connector for drop to SmartPipe+ or other piping.

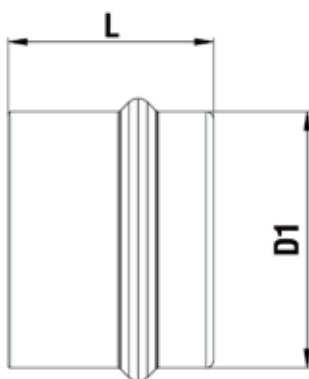
Part No.	ØD (mm)	NPT	L1	L	H	Drill (mm)	Weight
ANK7011	80	1/2	2-9/16	5-7/16	5	25	0.65
ANK7111		3/4	3-1/16				
ANK8011	100	1/2	2-1/8	6-11/16	5-15/16		0.75
ANK9011	150	1/2	2-3/16	8-5/8	7-15/16		0.95



End Cap

Part No.	ØD (mm)	L	D1	Weight
ANK7006	80	2-3/16	3-3/8	0.60
ANK8006	100		4	1.40
ANK9006	150	2-3/4	6	2.54
ANKA006	200		8-1/16	2.89

Supplied with union connector



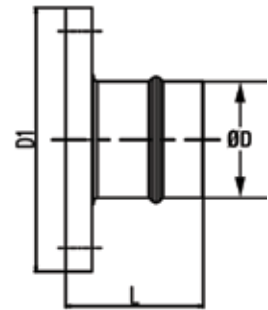
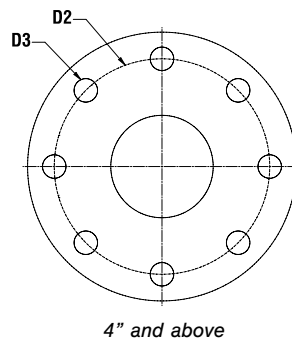
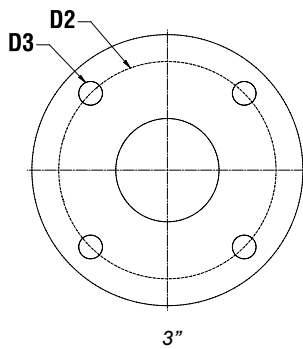
Dimensions in inches (in.) and weight in pounds (lbs.) unless otherwise noted. For 3/4" through 2 1/2" piping and fittings, see SmartPipe+. For installation instructions see SmartPipeXL Installation Guide. **Specifications subject to change without notice.**

Aluminum Flange



Part No.	ØD (mm)	Flange Size	Bolt Size	No. Bolts	L	D1	D2	D3	Wt.
ANK7170	80	3	M16	4	3-1/4	7-7/8	6-5/16	11/16	5.92
ANK8170	100	4			3-5/8	8-11/16	7-1/16	11/16	6.97
ANK9170	150	6	M20	8	3-15/16	11-1/4	9-7/16	7/8	11.68
ANKA170	200	8			4-5/16	13-3/8	11-5/8	7/8	16.64

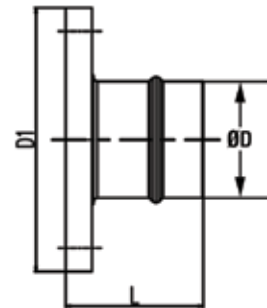
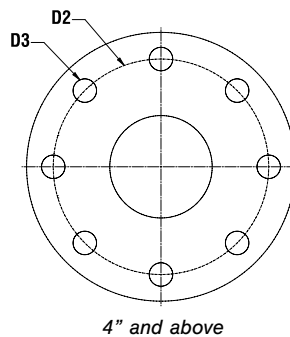
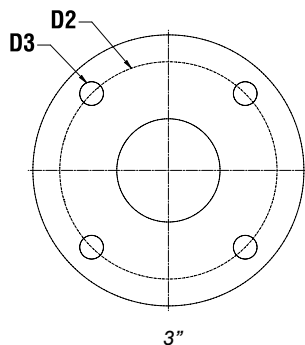
Includes bolts and gasket
 Supplied with 1 union connector
 ANSI Class 150 Flange



Aluminum Reducing Flange

Part No.	ØD (mm)	Flange Size	Bolt Size	No. Bolts	L	D1	D2	D3	Wt.
ANK8671	63	4	M16	8	3-5/16	8-11/16	7-1/16	11/16	9.5
ANK8771	80	4	M16	8	3-5/16	8-11/16	7-1/16	11/16	7.18
ANK7871	100	3	M16	4	3-5/8	7-7/8	6-5/16	11/16	6.61
ANK9871	100	6	M20	8	3-5/8	11-1/4	9-7/16	7/8	11.99

Includes bolts and gasket
 Supplied with 1 union connector
 ANSI Class 150 Flange

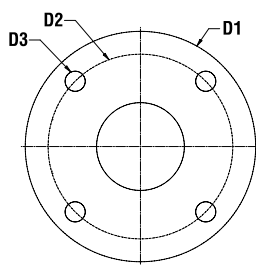


Dimensions in inches (in.) and weight in pounds (lbs.) unless otherwise noted. For 3/4" through 2 1/2" piping and fittings, see SmartPipe+. For installation instructions see SmartPipeXL Installation Guide. **Specifications subject to change without notice.**

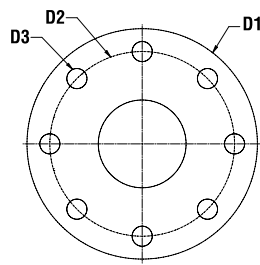
Threaded Flange



Part No.	ØD (mm)	Flange Size	FNPT	Material	Bolt Size	D1	D2	D3	H	Wt.
ANK2279	25	1	1	Cast Iron	M14	4-5/16	3-1/8	9/16	5/8	3.25
ANK4479	40	1-1/2	1-1/2			4-15/16	3-7/8			4.70
ANK5579	50	2	2		M16	5-15/16	4-3/4	11/16	1-1/16	6.85
ANK6579	63	2-1/2	2			7-1/16	5-1/2			10.50
ANK7679	80	3	2-1/2			7-1/2	6			12.35
ANK8579	100	4	2		M20	9-1/16	7-1/2	7/8	1-1/4	21.20
ANK9779	150	6	3			11	9-1/2			35.90
ANK2270	25	1	1	Stainless Steel	M14	4-5/16	3-1/8	9/16	5/8	3.25
ANK4470	40	1-1/2	1-1/2			4-15/16	3-7/8			4.70
ANK5570	50	2	2		M16	5-15/16	4-3/4	11/16	1-1/16	6.70
ANK6570	63	2-1/2	2			7-1/16	5-1/2			10.75
ANK7670	80	3	2-1/2			7-1/2	6			12.40
ANK8670	100	4	2-1/2		M20	9-1/16	7-1/2	7/8	1-1/4	20.35
ANK9770	150	6	3			11	9-1/2			36.30



3" and below



4" and above



Includes 1 gasket and 4 bolts for 1" through 3" flange
Includes 1 gasket and 8 bolts for 4" flange and above
ANSI Class 150 Flange

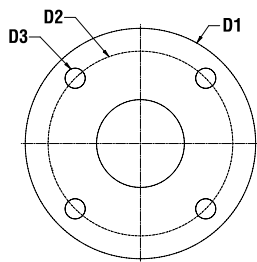
Butterfly Valves

Part No.	ØD (mm)	Flange Size	L	Material	Weight
ANK7051	80	3	8-1/4	Cast Iron	18.74
ANK8051	100	4	9-5/16		29.32
ANK9051	150	6	10-1/16		48.95
ANKA051	200	8	10-15/16		86.86

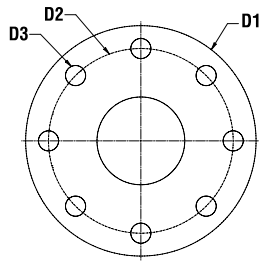
Supplied with union connectors
Pre-assembled with bolts and gaskets
ANSI Class 150 Flanges



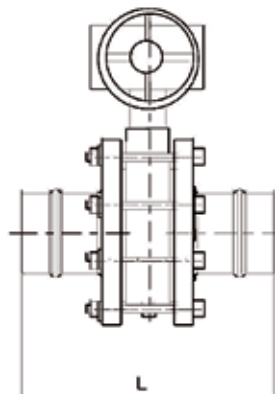
80 mm uses handle. Other sizes use wheel.



3" and below



4" and above



Dimensions in inches (in.) and weight in pounds (lbs.) unless otherwise noted. For 3/4" through 2 1/2" piping and fittings, see SmartPipe+. For installation instructions see SmartPipeXL Installation Guide. **Specifications subject to change without notice.**

SmartPipe Clips (Wall Mount)



Part No.	Description	ØD (mm)	L	H
ANKSNS80HS	80mm Wall Mount Clip	80	6"	4"
ANKSNS100HS	100mm Wall Mount Clip	100	6-1/2"	4-1/2"

SmartPipe Hangers (Unistrut and Threaded rod)

Part No.	Description	ØD (mm)	L	H
ANKSNS80P	80mm Hanger	80	6"	4"
ANKSNS100P	100mm Hanger	100	6-1/2"	4-1/2"



Part No.	Description
ANKSNSS	Spacer/backplate threaded 3/8 16
ANKSNSSN	SNS Strut Nut 3/8 threaded



Dimensions in inches (in.) and weight in pounds (lbs.) unless otherwise noted. For 3/4" through 2 1/2" piping and fittings, see SmartPipe+. For installation instructions see SmartPipeXL Installation Guide. **Specifications subject to change without notice.**

Fixture Clip (Steel)

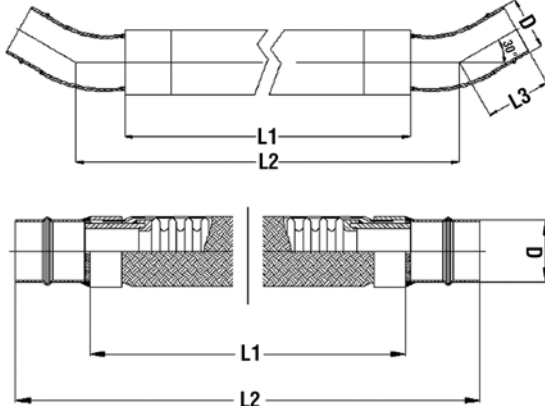


Part No.	ØD (mm)	Weight	Mounting Connection Size
ANK7122	80	0.86	3/8" - 16
ANK8122	100	0.88	
ANK9122	150	1.65	
ANKA122	200	1.71	

Flexible Hose

Part No.	Ø (mm)	D	L1	L2	L3	Material	Weight
ANK7155	80	3-5/16	66-15/16	72-13/16	4.5	Rubber, 30°	13.23
ANK8155	100	4		74-13/16	4		13.23
ANK7055	80	3-5/16	19-11/16	25-9/16	NA	SS304 Straight Connection	10.41
ANK8055	100	4	19-11/16	26			10.14
ANK9055	150	6	35-7/16	41-15/16			19.84
ANKA055	200	8-1/16	55-1/8	61-3/16			35.27

Supplied with 2 union connectors. Use with AN66989903 anti-whiplash strap.



Refer to installation information for proper installation practices.

Dimensions in inches (in.) and weight in pounds (lbs.) unless otherwise noted. For 3/4" through 2 1/2" piping and fittings, see SmartPipe+. For installation instructions see SmartPipeXL Installation Guide. **Specifications subject to change without notice.**

Wall Manifold

Part No.	NPT	Fig.	A	B	C	E	F	G	H	I	Wt.
AN8984406904	3/4 x 1/2	1	2	2-3/16	2-1/2	1	1/2	3/4	1/4	1	0.4
AN8984706904		2	6-1/16								1.4

Fig. 1

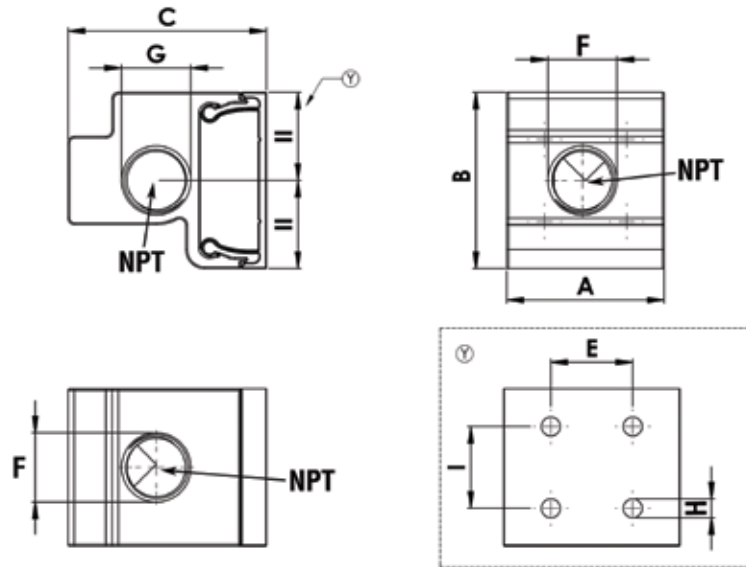
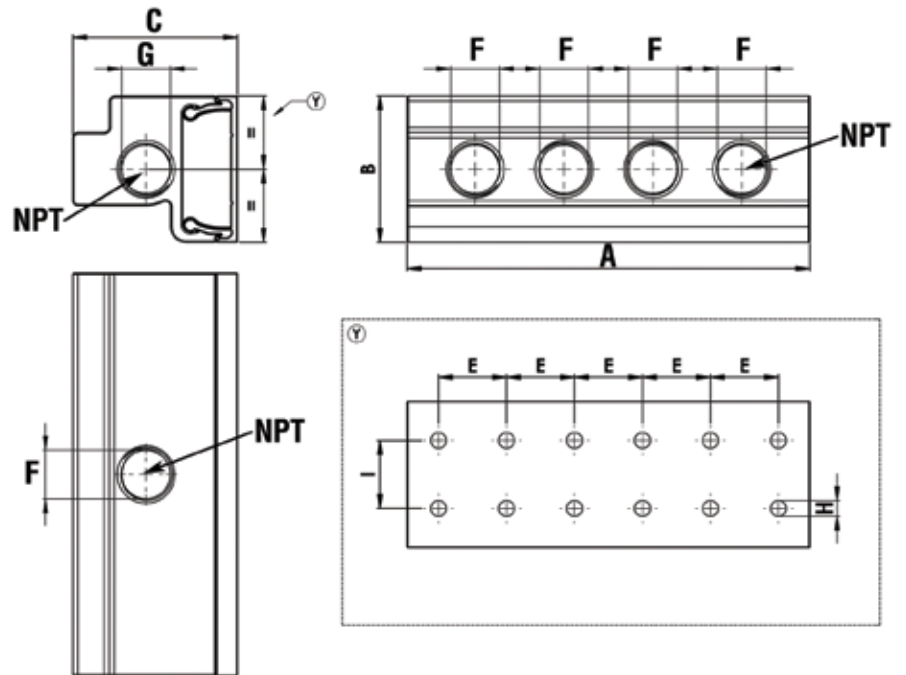


Fig. 2

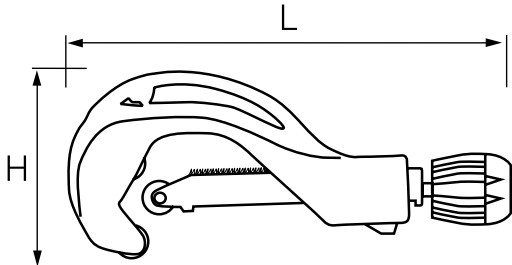


Dimensions in inches (in.) and weight in pounds (lbs.) unless otherwise noted. For 3/4" through 2 1/2" piping and fittings, see SmartPipe+. For installation instructions see SmartPipeXL Installation Guide. **Specifications subject to change without notice.**

Pipe Cutter



Part No.	L	H	Weight
ANK0140	12-1/2	6	4.23



ANK0140, 40 mm - 100 mm (1½" to 4") Pipe Cutter, uses replacement blades ANK0340.

Hole Saw Bits

Part No.	Description	Weight
ANK0243	Drill Arbor and Pilot Bit (14 mm to 25 mm)	0.20
ANK0643	Drill Arbor and Pilot Bit (32 mm to 152 mm)	0.20
ANK0343	25 mm Hole Saw Bit	0.34
ANK0443	38 mm Hole Saw Bit	0.34
ANK0543	51 mm Hole Saw Bit	0.34



Drill arbor and pilot bit



Hole saw bits

Hole Deburrer



Part No.	Weight
ANK0042	0.08

Anti-whiplash Strap



Part No.	Weight
AN66989903	0.47

Prevents whiplash should SmartPipeXL flexible hose be disconnected while under pressure. Conforms to ISO 4414 safety standard.

Portable Electric Pipe Cutter

Part No.	Description	Weight
ANK0344	SmartPipeXL 63 mm to 200 mm (2½" to 8") Electric Pipe Cutter	23.30



Portable Lugging Machine and Accessories



Part No.	Description	Weight
ANK0844*	SmartPipeXL Portable Lugging Machine for 63 mm to 200 mm Pipe	39.00
ANK1844	Jaw Kit (includes master jaw and all jaw sets)	15.20

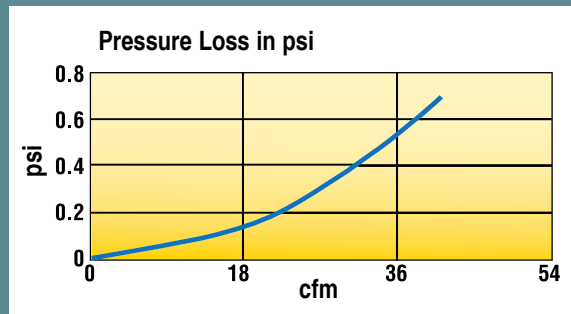
* Includes lugging machine and jaw kit (ANK1844)

Dimensions in inches (in.) and weight in pounds (lbs.) unless otherwise noted. For ¾" through 2½" piping and fittings, see SmartPipe+. For installation instructions see SmartPipeXL Installation Guide. **Specifications subject to change without notice.**

Composite Quick-Connect Couplers and Plugs

SmartPipe couplers are designed for easy one-handed connection and disconnection. To connect, simply press the plug into the coupler port. To disconnect, pull the coupler sleeve to release the plug.

Pressure Loss in Couplers



Cv rating = 1.24

Universal Coupler (ISO 6150B/Automotive)



Part No.	Nipple	NPT
ANK1484	1/4"	1/2"
ANK3884	3/8"	1/2"

Industrial Nipples (ISO B)



Part No.	Nipple	NPT
ANK4184	1/4"	1/4"
ANK8184	3/8"	3/8"

Automotive Nipples



Part No.	Nipple	NPT
ANK4284	1/4"	1/4"
ANK8284	3/8"	3/8"

Dimensions in inches (in.) and weight in pounds (lbs.) unless otherwise noted. For 3/4" through 2 1/2" piping and fittings, see SmartPipe+. For installation instructions see SmartPipeXL Installation Guide. **Specifications subject to change without notice.**

Warranty



SmartPipeXL™

3” to 10”

Kaeser Compressors, Inc. herein referred to as “Kaeser,” warrants the Kaeser SmartPipeXL™ delivered hereunder will be free of defects in material and workmanship for a period of ten (10) years from the date of purchase of the products.

Kaeser does not warranty the design, assembly or installation of the system, but only the components as stated herein. Kaeser is not responsible for improper design, assembly or installation, or for any modifications of the Kaeser products.

Should any failure to conform with the above warranties occur during the specified period under normal use, and the components have been proven to Kaeser’s satisfaction to have been properly stored, installed and maintained, and purchaser has complied with all procedures outlined in the service manual or installation instructions then Kaeser shall, with prompt notice correct the non-conformities at its option either by replacement or by refund of the purchase price of the non-conforming equipment. Return of such component to such delivery point as Kaeser may direct pursuant to this paragraph shall be at the purchaser’s risk and expense. Kaeser warrants any components replaced pursuant to the above warranty, under normal use, to be free from defects in workmanship and material for a period of ninety (90) days after the shipment of such replaced components or for a period ending on the expiration of the original component warranty, whichever is longer. Unless otherwise expressly agreed, Kaeser shall not be responsible for labor charges, loss or damage resulting from improper operation, maintenance or repairs made by personnel other than those authorized in writing by Kaeser, or damage to equipment caused by the use of non-authorized replacement parts.

Replacement or refund (whichever Kaeser determines, in its sole discretion, to provide) shall be Kaeser’s sole obligation and purchaser’s exclusive remedy for any nonconformity, noncompliance, defect or deficiency in components furnished hereunder, and shall be conditioned upon purchaser’s return of the defective components to Kaeser (DAP Kaeser’s directed delivery point) if Kaeser requires such return. This exclusive remedy will not be deemed to have failed of its essential purpose so long as Kaeser is willing to provide replacement or refund. **THE EXPRESS WARRANTY CONTAINED HEREIN IS EXCLUSIVE AND IN LIEU OF ALL OTHER REPRESENTATIONS AND WARRANTIES, EXPRESSED OR IMPLIED, AND KAESER EXPRESSLY DISCLAIMS AND EXCLUDES ANY IMPLIED WARRANTY OF MERCHANTABILITY OR FITNESS FOR ANY PARTICULAR PURPOSE, AND ANY WARRANTIES ARISING FROM COURSE OF DEALING OR USAGE OF TRADE.**

AUTHORIZATION FROM THE SERVICE DEPARTMENT IS NECESSARY BEFORE MATERIAL IS RETURNED TO THE FACTORY OR IN-WARRANTY REPAIRS ARE MADE.

Product Warranty Registration

In order for Kaeser Compressors, Inc. to properly handle warranty or other service requests, please **register online at us.kaeser.com/warranty**.

LIMITATION OF LIABILITY

THE REMEDIES OF THE CUSTOMER SET FORTH HEREIN ARE EXCLUSIVE, AND KAESER'S LIABILITY WITH RESPECT TO EQUIPMENT SOLD HEREUNDER SHALL BE LIMITED TO THE APPLICABLE WARRANTY PROVIDED HEREIN AND, WITH RESPECT TO ANY BREACH OF ITS CONTRACT WITH CUSTOMER, SHALL BE LIMITED TO THE CONTRACT PRICE OF EQUIPMENT THAT IS THE SUBJECT OF THE BREACH; PROVIDED, HOWEVER, THAT THE FOREGOING SHALL NOT APPLY IN THE EVENT OF ANY ACT THAT CONSTITUTES GROSS NEGLIGENCE OR WILLFUL MISCONDUCT BY KAESER, AND THAT KAESER WILL HAVE NO LIABILITY WHATSOEVER WITH RESPECT TO ANY ADVICE OR TECHNICAL INFORMATION PROVIDED WITHOUT CHARGE. PRIOR TO CUSTOMER HAVING ANY RIGHT TO RECOVER DAMAGES (SUBJECT TO THE LIMITATIONS SET FORTH HEREIN), KAESER SHALL HAVE THE RIGHT TO CORRECT ANY DEFECT OR NON-CONFORMITY OF ANY EQUIPMENT SOLD HEREUNDER IN A REASONABLE TIME FRAME, AND IF KAESER DETERMINES THAT IT IS UNABLE OR UNWILLING TO CORRECT ANY SUCH DEFECT OR NON-CONFORMITY, THEN KAESER WILL ALSO HAVE THE RIGHT TO REFUND THE PRICE OF THE DEFECT OR NON-CONFORMITY. NOTWITHSTANDING ANYTHING HEREIN TO THE CONTRARY, IN NO EVENT SHALL EITHER PARTY BE LIABLE FOR SPECIAL, INDIRECT, INCIDENTAL, CONSEQUENTIAL OR PUNITIVE DAMAGES, OR EXPENSES INCURRED BY THE OTHER PARTY, THE OTHER PARTY'S CUSTOMERS OR ANY THIRD PARTY, WHETHER ARISING FROM BREACH OF CONTRACT, WARRANTY, NEGLIGENCE, STRICT LIABILITY IN TORT OR OTHER THEORIES OF LAW OR EQUITY, INCLUDING BUT NOT LIMITED TO LOSS OF PROFITS OR REVENUE, LOSS OF USE OF EQUIPMENT OR ANY ASSOCIATED EQUIPMENT, COST OF CAPITAL, COST OF SUBSTITUTE FACILITIES OR SERVICES, DOWNTIME COSTS OR CLAIMS OF CUSTOMERS OR SUCH OTHER PARTY FOR SERVICE INTERRUPTION, OR ANY OTHER TYPES OF ECONOMIC LOSS WHETHER OR NOT SUCH LOSS OR DAMAGE IS BASED ON CONTRACT, WARRANTY, NEGLIGENCE, INDEMNITY, STRICT LIABILITY OR OTHERWISE.



Kaeser Compressors, Inc.
511 Sigma Drive
Fredericksburg, VA 22408 USA
Telephone: 540-898-5500
Toll Free: 800-777-7873
info.usa@kaeser.com

us.kaeser.com



Management System
ISO 9001:2015
ISO 14001:2015
www.tuv.com
ID: 9106616471



© 2024 Kaeser Compressors, Inc. All rights reserved. 08/24

The world is our home

As one of the world's largest compressed air systems providers and compressor manufacturers, KAESER COMPRESSORS is represented throughout the world by a comprehensive network of branches, subsidiary companies and factory trained partners.

With innovative products and services, KAESER COMPRESSORS' experienced consultants and engineers help customers to enhance their competitive edge by working in close partnership to develop progressive system concepts that continuously push the boundaries of performance and compressed air efficiency. Every KAESER customer benefits from the decades of knowledge and experience gained from hundreds of thousands of installations worldwide and over ten thousand formal compressed air system audits.

These advantages, coupled with KAESER's worldwide service organization, ensure that our compressed air products and systems deliver superior performance with maximum uptime.



Kaeser Compressors, Inc.
511 Sigma Drive
Fredericksburg, VA 22408 USA
Telephone: 540-898-5500
Toll Free: 800-777-7873
info.usa@kaeser.com

Kaeser Compressors Canada Inc.
3760 La Vérendrye Street
Boisbriand, QC J7H 1R5 CANADA
Telephone: (450) 971-1414
Toll free: (800) 477-1416
info.canada@kaeser.com

Kaeser Compresores de México S de RL de CV
Calle 2 #123
Parque Industrial Jurídica
76100 Querétaro, Qro.
Telephone: 01 (442) 218 64 48
sales.mexico@kaeser.com

Kaeser Compresores de Guatemala y Cia. Ltda.
3a calle 6-51, zona 13
Colonia Pomplona
01013-Guatemala City
Telephone: +502 2412-6000
info.guatemala@kaeser.com